




# JCP.3 SERIES

- ✓ Full aluminium frame
- ✓ Shade wherever you want, depending on the position of the sun
- ✓ Put together according to your taste and preference
- ✓ Ideal for both private use and the contract market
- ✓ Belgian design
-  Ambiance pictures

360°



The most iconic models from Caractère. Three Series includes umbrellas that are the heart of your garden, perfect for shelter and protection from the sun. Every model is extremely convenient to move and operate. Via the slider, you can easily move this parasol into every desired position and turn 360° without having to move its base. Tilt in height or left and right, depending on what time of day and the position of the sun. The sleek, octagonal design of Caractère is reflected in all parts and provides a modern, industrial look.

- FRAME** Free pole umbrella with crank handle. Pole & ribs are aluminium powder coated. Pole profile: 80 x 80 x 2,5 mm, 3,1 x 3,1 x 0,1". Ribs profile: 22 x 22 x 1,6 mm, 0,9 x 0,9 x 0,06".
- CANOPY** 320g/m<sup>2</sup> Sunbrella® Plus, 100% solution dyed acrylic.
- BASE** Hot galvanized and powder coated steel plates.
- TILT & ROTATION** Tilt in height, left and right and rotate 360° around its pole.
- WIND SPEED** 58 km/h, 36 mph - Maximum wind speed to which the umbrella may be exposed.



JCP.301  
300 x 300 cm



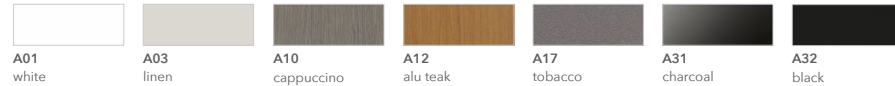
JCP.302  
260 x 260 cm



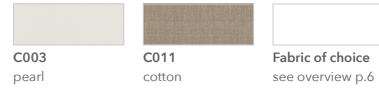
JCP.303  
ø 350 cm

**jardinico**

**FRAME**



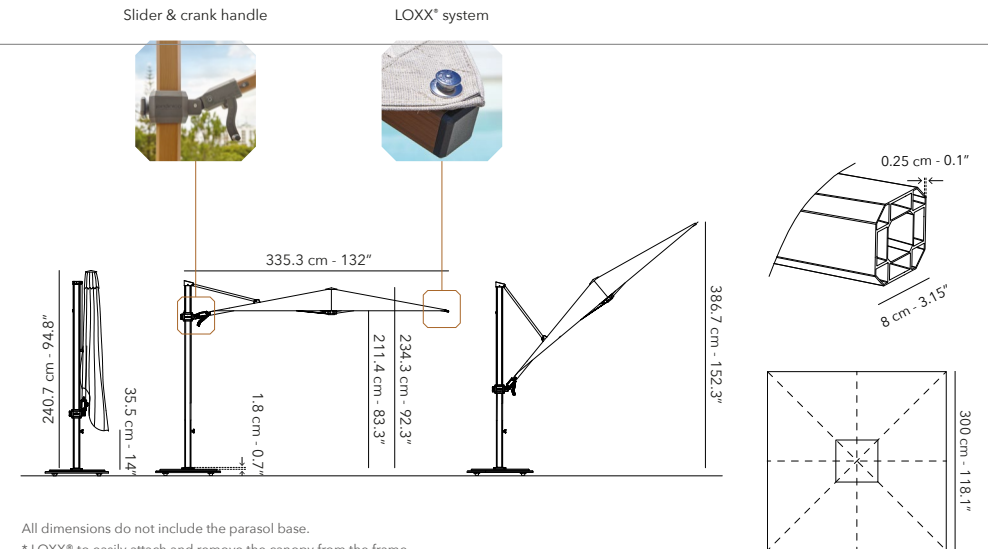
**CANOPY**



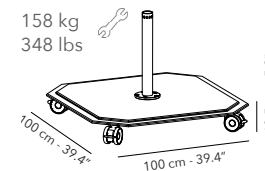
JCP.301



| 300 X 300 CM  | Weight net          | Weight gross        | Packaging CBM                           |
|---|---------------------|---------------------|---|
| UMBRELLA FRAME & CANOPY                               | 37 kg<br>81.6 lbs   | 38 kg<br>83.8 lbs   | 370 x 38 x 38 cm<br>99.2 x 15.7 x 7.9"  |
| <b>UFJCP.301</b><br>FRAME ONLY INCL. PROTECTION COVER | 37 kg<br>81.6 lbs   | 38 kg<br>83.8 lbs   | 252 x 40 x 20 cm<br>99.2 x 15.7 x 7.9"  |
| <b>UCJCP.301</b><br>CANOPY ONLY                       | 5 kg<br>11 lbs      | 7 kg<br>15.4 lbs    | 60 x 46 x 11 cm<br>23.6 x 18.1 x 4.3"   |
| <b>UBJCP.2S-3S-A</b><br>STEEL BASE                    | 158 kg<br>348 lbs   | 167 kg<br>368.2 lbs | 103 x 103 x 17 cm<br>40.6 x 40.6 x 6.7" |
| <b>UBJCP.2S-3S</b><br>GRANITE BASE                    | 135 kg<br>297.5 lbs | 144 kg<br>316.8 lbs | 100 x 100 x 17 cm<br>39 x 39 x 6.7"     |
| <b>UBIGB-JCP.2S-3S</b><br>IN GROUND BASE              | 6 kg<br>13.2 lbs    | 7 kg<br>15.4 lbs    | 27 x 52 x 27 cm<br>10.6 x 20.5 x 10.6"  |
| <b>UBOGB-JCP.2S-3S</b><br>ON GROUND BASE              | 6.5 kg<br>14.33 lbs | 7 kg<br>15.4 lbs    | 27 x 27 x 6 cm<br>10.6 x 10.6 x 2.4"    |
| <b>UPJCP.3S-X77</b><br>PROTECTION COVER               | 0.8 kg<br>1.8 lbs   | 1 kg<br>2.2 lbs     | 17 x 48 x 4 cm<br>6.7 x 18.9 x 1.6"     |

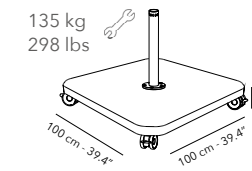


All dimensions do not include the parasol base.  
\* LOXX\* to easily attach and remove the canopy from the frame.



**STEEL BASE**

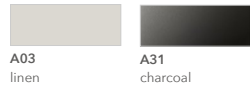
- Base with four wheels that rotate 360°, each with a brake to secure the umbrella.
- Has the same colour as the frame.  
We provide a charcoal parasol base for a frame in aluminum teak and cappuccino.



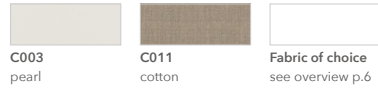
**GRANITE BASE**

- Base with four wheels that rotate 360°, each with a brake to secure the umbrella.
- Please note that the colour of the stone may vary slightly, as it is made from natural granite.

**FRAME**



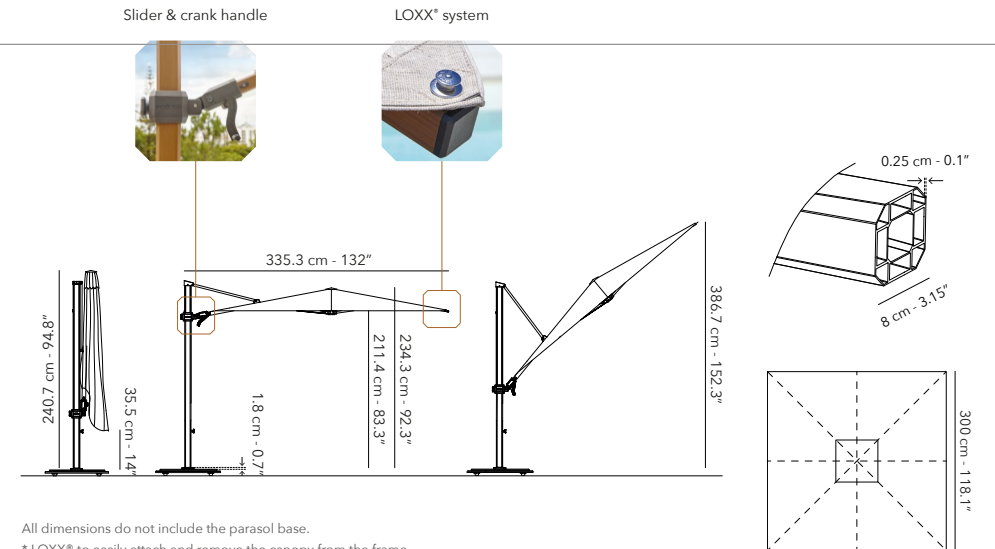
**CANOPY**



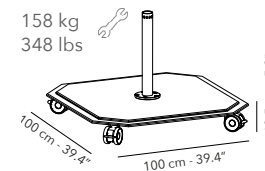
# JCP.301 LED



| 300 X 300 CM with LED                                 | Weight net          | Weight gross        | Packaging CBM                           |
|---|---------------------|---------------------|---|
| UMBRELLA FRAME & CANOPY                               | 37 kg<br>81.6 lbs   | 38 kg<br>83.8 lbs   | 370 x 38 x 38 cm<br>99.2 x 15.7 x 7.9"  |
| <b>UFJCP.301</b><br>FRAME ONLY INCL. PROTECTION COVER | 37 kg<br>81.6 lbs   | 38 kg<br>83.8 lbs   | 252 x 40 x 20 cm<br>99.2 x 15.7 x 7.9"  |
| <b>UCJCP.301</b><br>CANOPY ONLY                       | 5 kg<br>11 lbs      | 7 kg<br>15.4 lbs    | 60 x 46 x 11 cm<br>23.6 x 18.1 x 4.3"   |
| <b>UBJCP.2S-3S-A</b><br>STEEL BASE                    | 158 kg<br>348 lbs   | 167 kg<br>368.2 lbs | 103 x 103 x 17 cm<br>40.6 x 40.6 x 6.7" |
| <b>UBJCP.2S-3S</b><br>GRANITE BASE                    | 135 kg<br>297.5 lbs | 144 kg<br>316.8 lbs | 100 x 100 x 17 cm<br>39 x 39 x 6.7"     |
| <b>UBIGB-JCP.2S-3S</b><br>IN GROUND BASE              | 6 kg<br>13.2 lbs    | 7 kg<br>15.4 lbs    | 27 x 52 x 27 cm<br>10.6 x 20.5 x 10.6"  |
| <b>UBOGB-JCP.2S-3S</b><br>ON GROUND BASE              | 6.5 kg<br>14.33 lbs | 7 kg<br>15.4 lbs    | 27 x 27 x 6 cm<br>10.6 x 10.6 x 2.4"    |
| <b>UPJCP.3S-X77</b><br>PROTECTION COVER               | 0.8 kg<br>1.8 lbs   | 1 kg<br>2.2 lbs     | 17 x 48 x 4 cm<br>6.7 x 18.9 x 1.6"     |
| <b>UA-LED-SP050</b><br>EXTRA BATTERY                  | 0.2 kg<br>0.45 lbs  | 0.4 kg<br>0.88 lbs  | 12 x 4.5 x 3 cm<br>4.7 x 1.8 x 1.2"     |

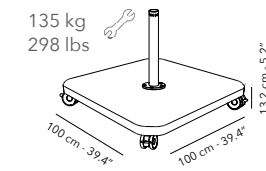


All dimensions do not include the parasol base.  
\* LOXX\* to easily attach and remove the canopy from the frame.



**STEEL BASE**

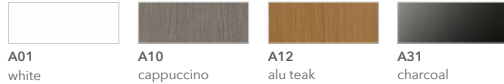
- Base with four wheels that rotate 360°, each with a brake to secure the umbrella.
- Has the same colour as the frame. We provide a charcoal parasol base for a frame in aluminum teak and cappuccino.



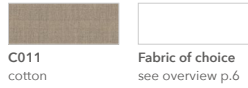
**GRANITE BASE**

- Base with four wheels that rotate 360°, each with a brake to secure the umbrella.
- Please note that the colour of the stone may vary slightly, as it is made from natural granite.

**FRAME**



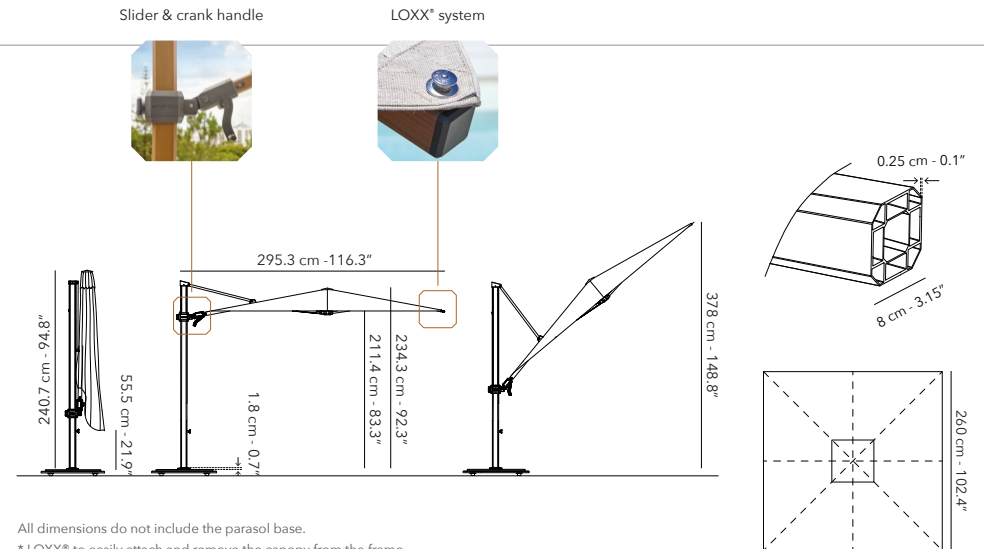
**CANOPY**



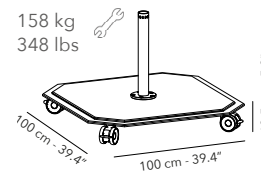
JCP.302



| 260 X 260 CM  | Weight net          | Weight gross        | Packaging CBM                           |
|---|---------------------|---------------------|---|
| UMBRELLA FRAME & CANOPY                               | 31 kg<br>68.3 lbs   | 34 kg<br>74.9 lbs   | 252 x 40 x 20 cm<br>99.2 x 15.7 x 7.9"  |
| <b>UFJCP.302</b><br>FRAME ONLY INCL. PROTECTION COVER | 26 kg<br>57.3 lbs   | 27 kg<br>59.5 lbs   | 252 x 40 x 20 cm<br>99.2 x 15.7 x 7.9"  |
| <b>UCJCP.302</b><br>CANOPY ONLY                       | 5 kg<br>11 lbs      | 7 kg<br>15.4 lbs    | 60 x 46 x 11 cm<br>23.6 x 18.1 x 4.3"   |
| <b>UBJCP.2S-3S-A</b><br>STEEL BASE                    | 158 kg<br>348 lbs   | 167 kg<br>368.2 lbs | 103 x 103 x 17 cm<br>40.6 x 40.6 x 6.7" |
| <b>UBJCP.2S-3S</b><br>GRANITE BASE                    | 135 kg<br>297.5 lbs | 144 kg<br>316.8 lbs | 100 x 100 x 17 cm<br>39 x 39 x 6.7"     |
| <b>UBIGB-JCP.2S-3S</b><br>IN GROUND BASE              | 6 kg<br>13.2 lbs    | 7 kg<br>15.4 lbs    | 27 x 52 x 27 cm<br>10.6 x 20.5 x 10.6"  |
| <b>UBOGB-JCP.2S-3S</b><br>ON GROUND BASE              | 6.5 kg<br>14.33 lbs | 7 kg<br>15.4 lbs    | 27 x 27 x 6 cm<br>10.6 x 10.6 x 2.4"    |
| <b>UPJCP.3S-X77</b><br>PROTECTION COVER               | 0.8 kg<br>1.8 lbs   | 1 kg<br>2.2 lbs     | 17 x 48 x 4 cm<br>6.7 x 18.9 x 1.6"     |

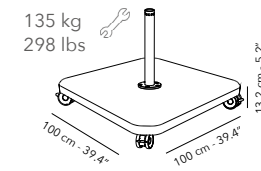


All dimensions do not include the parasol base.  
\* LOXX® to easily attach and remove the canopy from the frame.



**STEEL BASE**

- Base with four wheels that rotate 360°, each with a brake to secure the umbrella.
- Has the same colour as the frame. We provide a charcoal parasol base for a frame in aluminum teak and cappuccino.



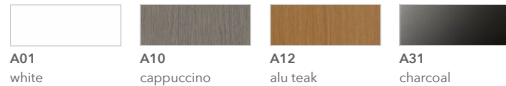
**GRANITE BASE**

- Base with four wheels that rotate 360°, each with a brake to secure the umbrella.
- Please note that the colour of the stone may vary slightly, as it is made from natural granite.

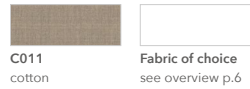


# JCP.303

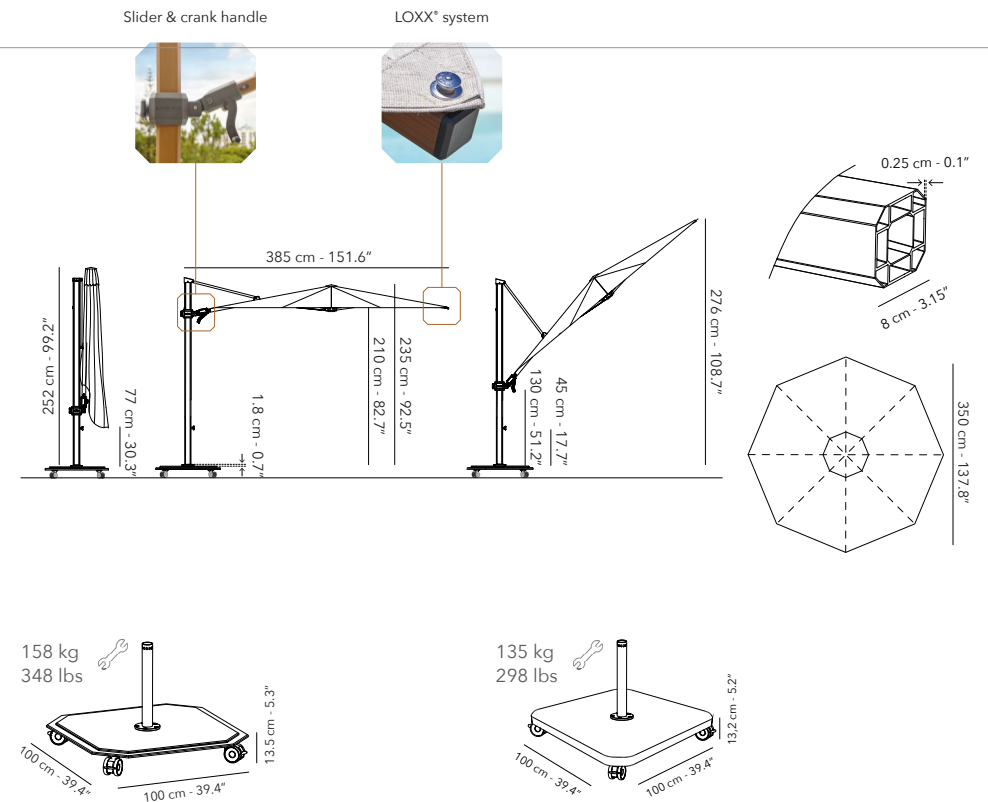
## FRAME - STRUCTURE



## CANOPY



| Ø 350 CM  | Weight net          | Weight gross        | Packaging CBM                           |
|---|---------------------|---------------------|---|
| UMBRELLA FRAME & CANOPY                               | 34 kg<br>74.9 lbs   | 36.5 kg<br>80.4 lbs | 252 x 40 x 20 cm<br>99.2 x 15.7 x 7.9"  |
| <b>UFJCP.303</b><br>FRAME ONLY INCL. PROTECTION COVER | 29 kg<br>63.9 lbs   | 29.5 kg<br>65 lbs   | 252 x 40 x 20 cm<br>99.2 x 15.7 x 7.9"  |
| <b>UCJCP.303</b><br>CANOPY ONLY                       | 5 kg<br>11 lbs      | 7 kg<br>15.4 lbs    | 60 x 46 x 11 cm<br>23.6 x 18.1 x 4.3"   |
| <b>UBJCP.2S-3S-A</b><br>STEEL BASE                    | 158 kg<br>348 lbs   | 167 kg<br>368.2 lbs | 103 x 103 x 17 cm<br>40.6 x 40.6 x 6.7" |
| <b>UBJCP.2S-3S</b><br>GRANITE BASE                    | 135 kg<br>297.5 lbs | 144 kg<br>316.8 lbs | 100 x 100 x 17 cm<br>39 x 39 x 6.7"     |
| <b>UBIGB-JCP.2S-3S</b><br>IN GROUND BASE              | 6 kg<br>13.2 lbs    | 7 kg<br>15.4 lbs    | 27 x 52 x 27 cm<br>10.6 x 20.5 x 10.6"  |
| <b>UBOGB-JCP.2S-3S</b><br>ON GROUND BASE              | 6.5 kg<br>14.33 lbs | 7 kg<br>15.4 lbs    | 27 x 27 x 6 cm<br>10.6 x 10.6 x 2.4"    |
| <b>UPJCP.3S-X77</b><br>PROTECTION COVER               | 0.8 kg<br>1.8 lbs   | 1 kg<br>2.2 lbs     | 17 x 48 x 4 cm<br>6.7 x 18.9 x 1.6"     |



### STEEL BASE

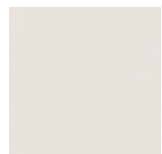
- Base with four wheels that rotate 360°, each with a brake to secure the umbrella.
- Has the same colour as the frame. We provide a charcoal parasol base for a frame in aluminum teak and cappuccino.

### GRANITE BASE

- Base with four wheels that rotate 360°, each with a brake to secure the umbrella.
- Please note that the colour of the stone may vary slightly, as it is made from natural granite.

## UMBRELLAS

### CATEGORY 3



C003 pearl



C011 cotton



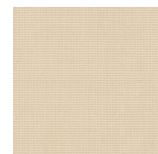
C022 nile



C025 mushroom



C026 howlite



C027 moonstone



C028 flax



C029 wheat



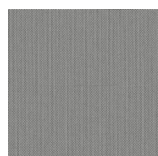
C030 papyrus



C031 nutmeg



C100 ice



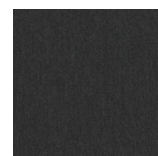
C107 mooncrest



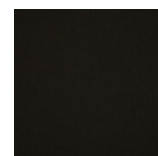
C114 concrete



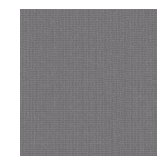
C115 cadet



C207 onyx



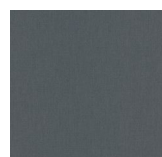
C210 pitch



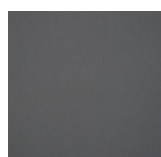
C216 rock



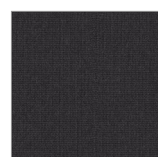
C217 iron



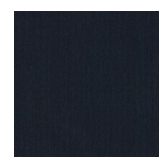
C218 pewter



C219 titanium



C220 basalt



C221 faroe



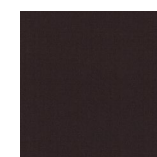
C222 slate



C305 umber



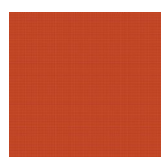
C308 gravel



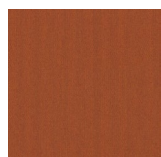
C309 ebène



C452 sunset



C453 rotala



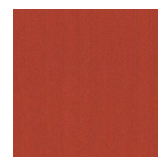
C454 gobi



C455 burgundy



C456 crimson



C457 sunrise



C458 fjord



C459 lapis



C460 celestial



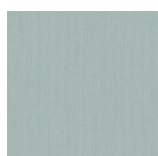
C461 marine



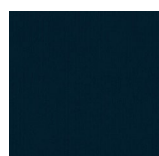
C462 teal



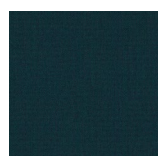
C463 navy



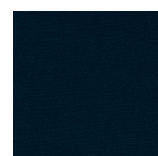
C464 glacier



C465 loyal



C466 emerald



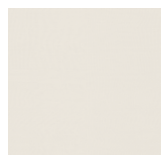
C468 berry

# FABRICS

## CATEGORY 2



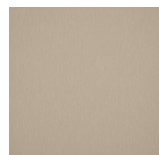
C019 tofu



C020 powder



C023 heather



C032 tulle



C033 lin



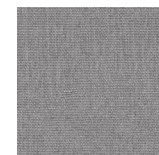
C034 antique



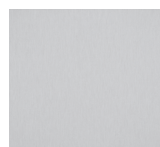
C035 trush



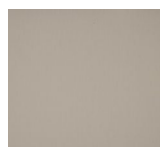
C036 fawn



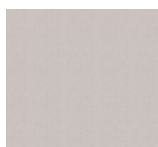
C112 fog



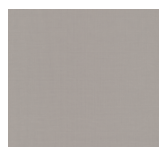
C113 plaster



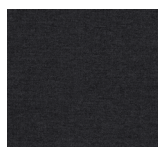
C116 cobble



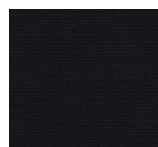
C117 milk



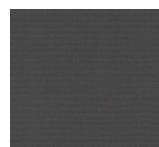
C118 steam



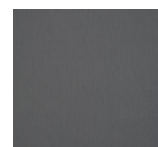
C214 eclipse



C215 shadow



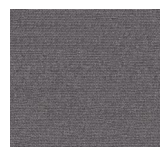
C223 fuel



C224 lead



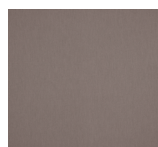
C225 ardoise



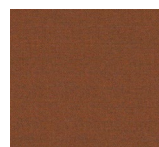
C226 tweed



C227 blackboard



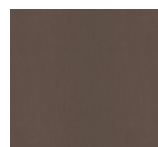
C307 cacao



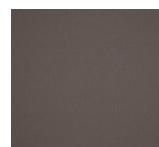
C310 amber



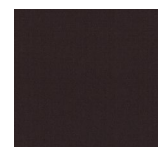
C311 vino



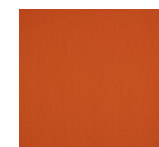
C312 chestnut



C313 auburn



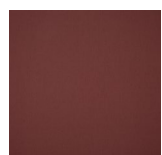
C314 chocolate



C402 tangerine



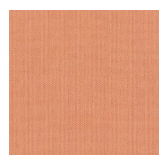
C403 pink



C409 brick



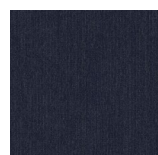
C443 moss



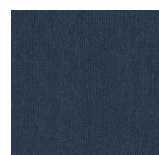
C444 peach



C450 arctic



C451 belharra



C469 mistral



C470 merlot



C471 antelope



C472 hive



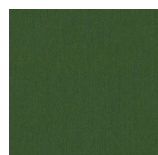
C473 poppy



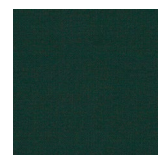
C474 pepper



C475 vivid



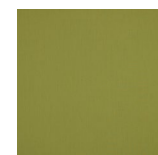
C476 calathea



C477 pinea



C478 macao

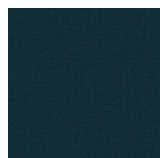


C479 lichen



C480 seafoam

# FABRICS



C481 beryl



C482 adriatic



C483 trust



C484 cyan



C485 curacao




C486 crisp

|                         | Category 3                 | Category 2                 |
|-------------------------|----------------------------|----------------------------|
| <b>composition</b>      | 100% solution dyed acrylic | 100% solution dyed acrylic |
| <b>grammage</b>         | 320 g/m <sup>2</sup>       | 260 g/m <sup>2</sup>       |
| <b>Lightfastness</b>    | level 7-8                  | level 7-8                  |
| <b>water resistance</b> | 1000 mm                    | 400 mm                     |
| <b>UV protection</b>    | > 98%                      | > 98%                      |

## PROTECTION COVER

We suggest to always use the protection cover to protect your outdoor umbrella from poor weather conditions or when not in use during the summer. The stain resistant and water repellent cover will extend their life for you to enjoy your umbrella whenever you like.

To enhance the durability and appearance, we recommend following our care instructions regularly.

| Ref. | Colour | Swatch  | About this fabric                            |
|------|--------|---|--|
| X77  | Black  |  | 100% solution dyed polyester with PU coating |



To enhance the durability and appearance, we recommend following our care instructions regularly.

The umbrella should never be used in strong wind or rainy conditions. An open umbrella should never be left unattended. The umbrella should be protected against blurring or damage by using its protection cover. The protection cover can be placed over the umbrella and pole. Store the umbrella in a dry place when not in use.

## FRAME & BASE

Clean the aluminium frame with a damp cloth, mild soap and water. Do not use any sharp tool to avoid scratches.

## CANOPY

Before use, you can apply an invisible film to make the canopy stain and water repellent by using a textile protector. You can maintain and clean your canopy by following a few simple steps:

- Brush off loose dirt before it becomes embedded in the fabric.
- Hose down.
- Spot clean soon after stains occur with water and mild soap or a textile cleaner (no detergents). Use a soft bristle brush to clean.
- Allow soap to soak in.
- Rinse thoroughly.
- Always let the canopy air dry completely before storing or covering.

Machine wash in cold water. Depending on wash load size, use normal amounts of mild laundry detergent and add 1 cup of bleach. Allow fabric to air dry.

NEVER SUBJECT TO EXCESSIVE HEAT, STEAM PRESS OR TUBLE DRY AS THE FABRIC WILL SHRINK.

|   |   | Weight net        | Weight gross      | Packaging CBM / CCF                  | Units |
|---|---|-------------------|-------------------|--------------------------------------|-------|
|  | <b>SPCOR-12ML CORRECTOR PEN</b><br>A01 white, A03 linen, A31 charcoal or A32 black  | 48 g<br>0.11 lbs  | 53 g<br>0.12 lbs  | 3 x 7 x 3 cm<br>1.2 x 2.8 x 1.2"     | 1     |
|  | <b>PT000388 FABRIC MAINTENANCE KIT</b><br>Includes 2 scrubbing sets, 3 application cloths, textile protector 750 ml, textile cleaner 750 ml | 1.7 kg<br>3.7 lbs | 1.9 kg<br>4.2 lbs | 21 x 28 x 10.5 cm<br>8.3 x 11 x 4.2" | 1     |



MADE FOR **SHADE &**  
**OUTDOOR LIVING.**

[www.jardinico.com](http://www.jardinico.com)